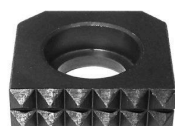
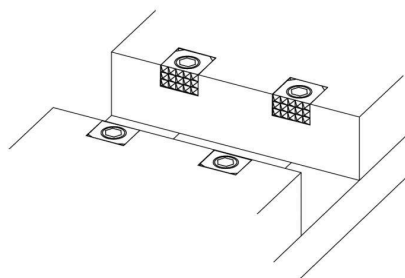


EDGE GRIPPERS

M-2 TOOL STEEL, HEAT TREATED RC 60-62, BLACK OXIDE FINISH



**Serrated
Hardened Tool Steel**

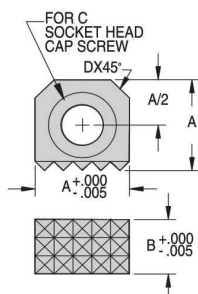


Edge Grippers are ideal for mounting at the top edge of a clamping face such as a vise jaw.

Edge Grippers are helpful for applications where traditional face-mounted grippers are difficult to install. They have a useful flat profile because the mounting screw is parallel to the serrated face. These serrated grippers are hard, replaceable inserts used to provide additional holding force and/or wear resistance when installed in a fixture. They are designed to slightly penetrate the workpiece to significantly increase gripping force, rather than relying on static friction alone. Edge Grippers should be mounted in a flat-bottom recess that provides support behind the gripper. Fasten with a standard socket-head cap screw (on the largest three sizes, a low-head cap screw is required). The serrated face should project 50 to 100% of serration height for maximum effectiveness (serration height is .062" on grippers with fine serrations, .047" on grippers with extra-fine serrations, and .031" on grippers with super-fine serrations).

INCH

PART NO.	A	B	SERRATIONS		C	COUNTERBORE DEPTH	D
CL-6-EG-4	3/8	1/4	Extra Fine	.094x90°	#6	.146	1/16
CL-6-EG-4-SF			Super Fine	.062x90°			
CL-6-EG-6		3/8	Extra Fine	.094x90°			
CL-6-EG-6-SF			Super Fine	.062x90°			
CL-8-EG-4	1/2	1/4	Fine	.125x90°	#8	.170	3/32
CL-8-EG-4-EF			Extra Fine	.094x90°			
CL-8-EG-6		3/8	Fine	.125x90°	.175		
CL-8-EG-6-EF			Extra Fine	.094x90°			
CL-8-EG-8		1/2	Fine	.125x90°			
CL-8-EG-8-EF			Extra Fine	.094x90°			
CL-10-EG-4	5/8	1/4	Fine	.125x90°	1/4 LHCS	.130	1/8
CL-10-EG-4-EF			Extra Fine	.094x90°			
CL-10-EG-6		3/8	Fine	.125x90°			
CL-10-EG-6-EF			Extra Fine	.094x90°			
CL-10-EG-8		1/2	Fine	.125x90°			
CL-10-EG-8-EF			Extra Fine	.094x90°			
CL-12-EG-4	3/4	1/4	Fine	.125x90°	5/16 LHCS	.161	1/8
CL-12-EG-4-EF			Extra Fine	.094x90°			
CL-12-EG-6		3/8	Fine	.125x90°			
CL-12-EG-6-EF			Extra Fine	.094x90°			
CL-12-EG-8		1/2	Fine	.125x90°			
CL-12-EG-8-EF			Extra Fine	.094x90°			
CL-16-EG-6	1	3/8	Fine	.125x90°	3/8 LHCS	.194	1/8
CL-16-EG-6-EF			Extra Fine	.094x90°			
CL-16-EG-8		1/2	Fine	.125x90°			
CL-16-EG-8-EF			Extra Fine	.094x90°			



METRIC

CLM-10-EG-6	10mm	6mm	Extra Fine	2.4x90°	M3 or #6	3.8	1.6
CLM-10-EG-10		10mm	Fine	3.2x90°	M4 or #8	4.1	2.3
CLM-12-EG-6	12mm	6mm	Fine	3.2x90°	M6 or 1/4 LHCS	4.2	3.2
CLM-12-EG-10		10mm	Fine	3.2x90°	M8 or 5/16 LHCS	5.1	3.2
CLM-12-EG-12	16mm	12mm	Fine	3.2x90°	M10 or 3/8 LHCS	6.1	3.2
CLM-16-EG-6		6mm	Fine	3.2x90°	M10 or 3/8 LHCS	6.1	3.2
CLM-16-EG-10	20mm	10mm	Fine	3.2x90°	M10 or 3/8 LHCS	6.1	3.2
CLM-16-EG-12		12mm	Fine	3.2x90°	M10 or 3/8 LHCS	6.1	3.2
CLM-20-EG-6	25mm	6mm	Fine	3.2x90°	M10 or 3/8 LHCS	6.1	3.2
CLM-20-EG-10		10mm	Fine	3.2x90°	M10 or 3/8 LHCS	6.1	3.2
CLM-20-EG-12	25mm	12mm	Fine	3.2x90°	M10 or 3/8 LHCS	6.1	3.2
CLM-25-EG-10		10mm	Fine	3.2x90°	M10 or 3/8 LHCS	6.1	3.2
CLM-25-EG-12	25mm	12mm	Fine	3.2x90°	M10 or 3/8 LHCS	6.1	3.2
CLM-25-EG-12		12mm	Fine	3.2x90°	M10 or 3/8 LHCS	6.1	3.2